



Elegant and Practical  
Downstage Display Solution

### Main Specifications:

The Comfort Monitor is an essential tool for enhancing stage presentations. Designed for seamless integration with teleprompter software, it allows presenters to discreetly view their content while maintaining a clean, professional stage appearance. Ideal for live events, conferences, and performances, the Comfort Monitor offers a practical, high-quality solution for managing stage cues without clutter.



**Teleprompter Compatibility**  
Seamlessly connects to teleprompter software for enhanced stage presentations



**Durable Protection Glass**  
Extra clear glass protects the display from damage and scratches.



**Motorized Angle Adjustment**  
Remote-controlled, adjustable from 0° to 60° for optimal viewing.



**Internal Storage & Cable Management:**  
Convenient compartments for power distribution and AV equipment.



**Commercial Grade Signage Monitor**  
Hides cabling and electronics for a clean, professional stage appearance.



**Braked Castors:**  
Mobility with lockable wheels for easy positioning on stage.

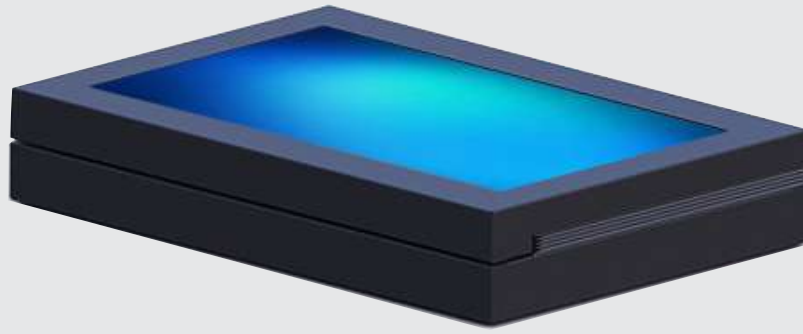
**32"  
55"**

**Versatile Display Sizes**  
Supports screens from 32" to 55" for various event needs.

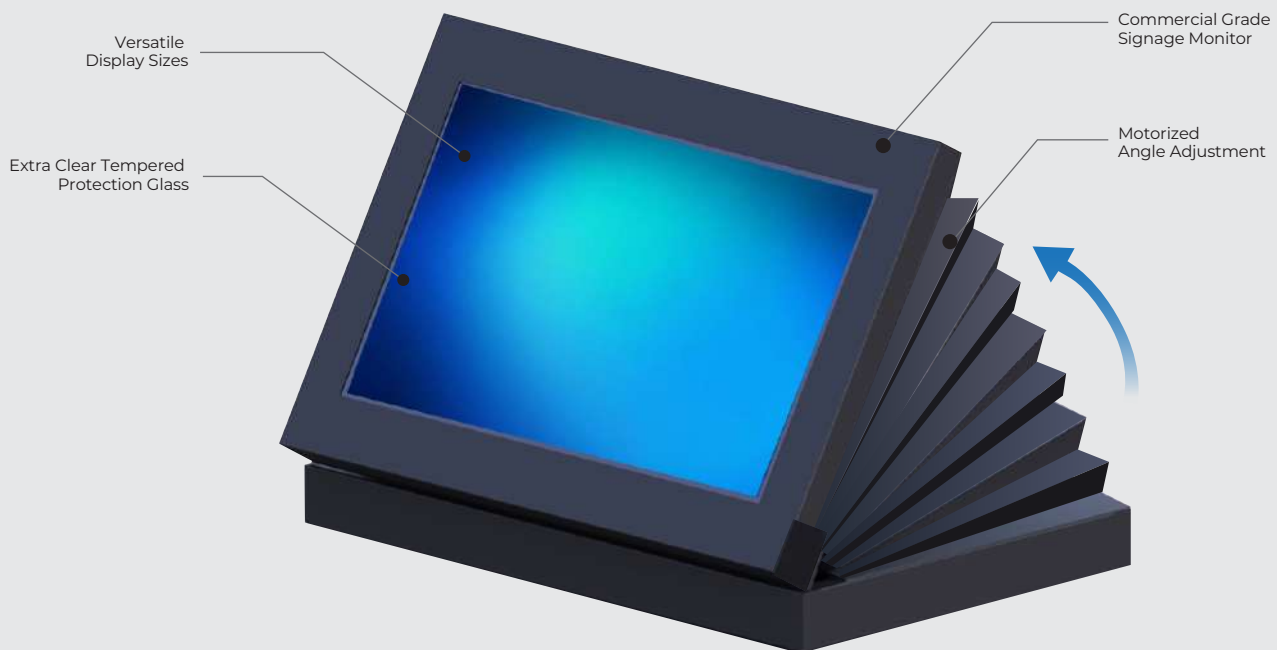


**Compact & Portable:**  
Folds down to 20 cm in height for easy storage and transport in the durable hard case.

1 CLOSED



2 OPEN



FLIGHT CASE



### Durable Hard Case for Portability

The Comfort Monitor comes with a durable hard case designed for easy and safe transport. When closed, the monitor's compact size allows it to fit neatly into the case, ensuring it is well-protected during transit without occupying excessive space.

- 6mm high quality plywood carcass.
- Locking catches.
- Glued & Pinned construction.
- 16mm aluminium angle to leading edges.
- Bright nickel and chromium plated fittings.
- Dust-tight hybrid aluminium seal for lid and base.
- Lockable wheels

32"  
55"

#### **Versatile Display Sizes:**

The Comfort Monitor is compatible with a range of screen sizes, from 32" to 55", making it adaptable for various stage settings and presenter needs. Available sizes include 32", 43", 50", and 55".



#### **Commercial Grade Signage Monitor**

The Comfort Monitor shroud ensures a neat, professional look on stage by hiding unsightly cabling and electronics. This sleek design maintains minimal visual impact, keeping the focus on the presenter while preserving the stage's aesthetic.



#### **Motorized Angle Adjustment:**

One of the standout features is the motorized angle adjustment, allowing you to set the display at any angle from 0 to 60 degrees via a remote control. This flexibility ensures optimal viewing angles for presenters, enhancing their performance. When not in use, the monitor can be fully closed to a flat 0-degree position, reducing its height to just 20 cm, making it easy to store and transport.



#### **Internal Storage & Cable Management:**

The Comfort Monitor stand features internal storage for power distribution, AV players, and other equipment, along with easy access to cabling via a large-diameter hole in the bottom panel, ensuring a tidy setup that accommodates standard plug sizes.



#### **Mobility with Braked Castors**

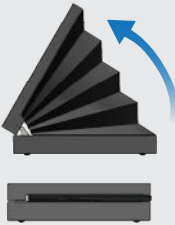

Built-in braked castors provide mobility for easy placement of the monitor on stage. Once positioned, the brakes ensure stability, keeping the monitor securely in place.



#### **Durable Protection:**

The monitor includes an extra clear protection glass that covers the display, offering protection against damage and scratches, ensuring long-term durability while maintaining a sharp, clear image.

# Specifications

| Model Name        | Angle Adjustable  |       |       |       | Fixed Angle   |       |       |       |
|-------------------|---|-------|-------|-------|---|-------|-------|-------|
|                   |  |       |       |       |  |       |       |       |
| Model No          | CT32M   | CT43M | CT50M | CT55M | CT32F   | CT43F | CT50F | CT55F |
| Screen Size       | 32" 43" 50" 55"   |       |       |       | 32" 43" 50" 55"   |       |       |       |
| Resolutions       | 4K Resolution   |       |       |       | 4K Resolution   |       |       |       |
| Brightness        | 500 cd/m2   |       |       |       | 500 cd/m2   |       |       |       |
| Protection Glass  | 4 mm extra clear tempered   |       |       |       | 4 mm extra clear tempered   |       |       |       |
| Angle Adjustment  | Motorized angle adjustment with remote control                                    |       |       |       | n/a   |       |       |       |
| Casters           | Mobility with Braked Castors  |       |       |       | Mobility with Braked Castors  |       |       |       |
| Folds Down Height | 20 cm   |       |       |       | -   |       |       |       |



## Europe

**Temas Technology Co.Ltd.**  
 Serifali Mh, Bayraktar Bulvari, Kible Sk,  
 No: 29 - 34775 Umraniye  
 Istanbul - TURKIYE  
 Tel: +90 216 314 54 54  
 info@temastechnology.com

## USA

**Temas Technology LLC**  
 11417 Irving Park Rd, Suite No. B-9-4  
 Franklin Park, 60131-3882,  
 Illinois - USA  
 Tel: +1 630 489 6994  
 sales@temastechnology.com

[www.temastechnology.com](http://www.temastechnology.com)